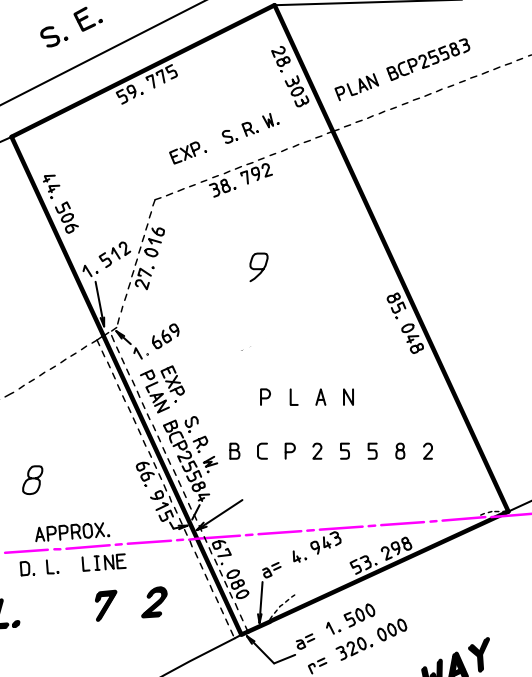


AST. NORTH

REM. FRAC. S.E. 1/4 SEC. 27

21



PLAN BCP25583

EXP. S.R.W.

9

10

PLAN BCP25582

8

D. L. 72

G.P. 2

PROGRESS WAY

APPROX. D.L. LINE

EXP. S.R.W. PLAN BCP25584

a = 1.500
r = 320.000

44.506

1.512

27.016

1.669

66.915

57.080

a = 4.943

53.298

59.775

38.792

28.303

85.048